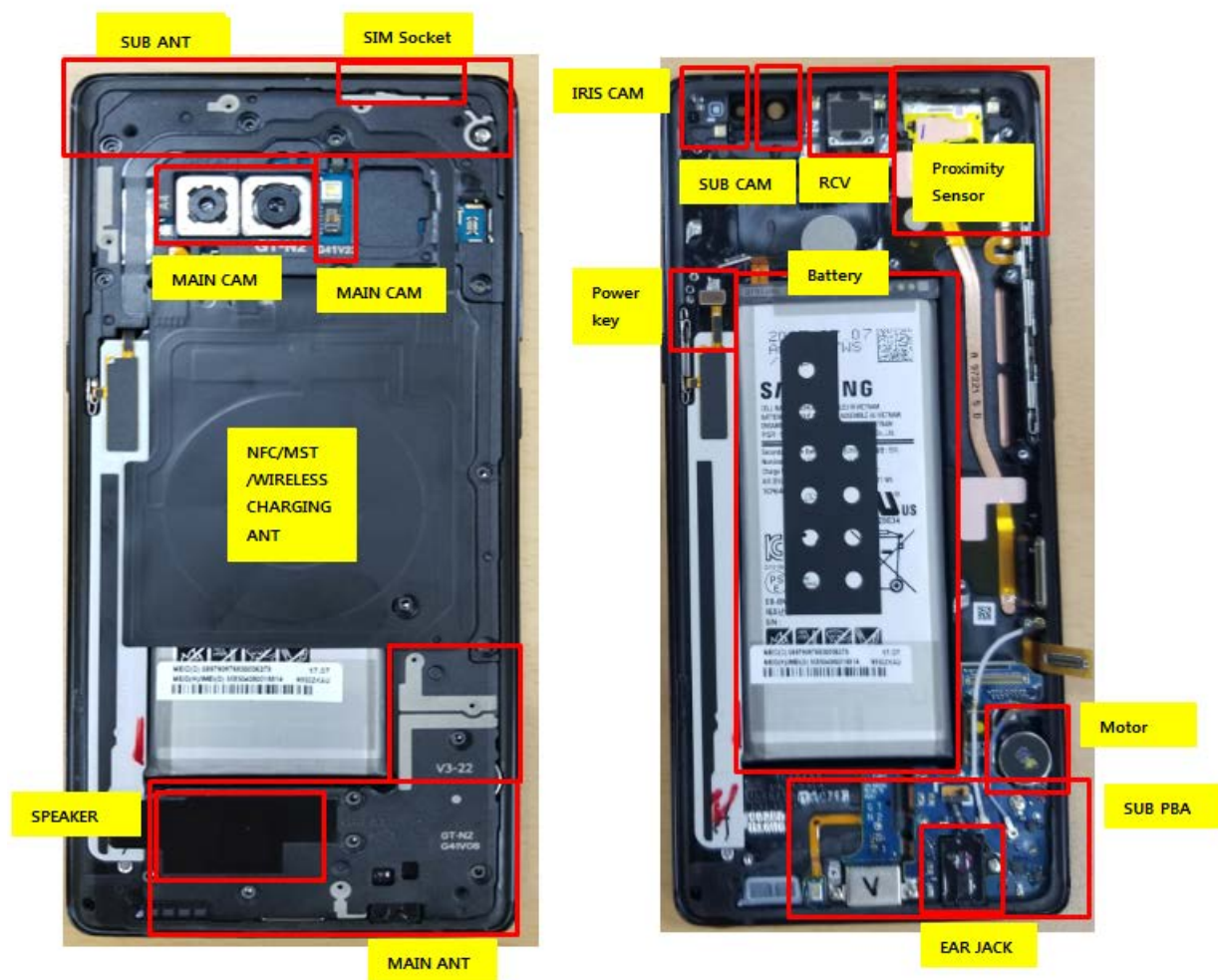

7. Level 2 Repair

7-1. Components on the Rear Case




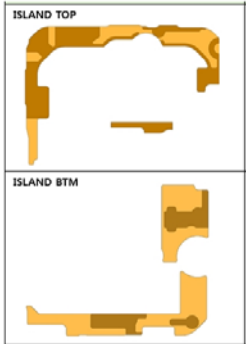
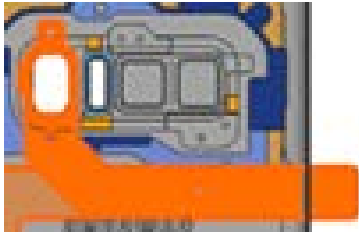

7. Level 2 Repair

7-2. Pre-requisite

	
Tweezers / Disass'y Stick / Screw Driver	Anti-static Gloves
	
Anti-static Mat	Hot Plate
	
A OCTA Disassembly Holder	OCTA Disassembly Upper
	
Ethyl Alcohol	Cotton Swab

7. Level 2 Repair

7-3. Parts which must be changed after repair

BOM description & part code	KIT CODE	Image	Remarks
A/S-SVC TAPE BG WP OUTER (Common) [GH81-15036A]	[GH82-15094A]		Replace for Back Glass repair
A/S-SVC TAPE BG INNER (JPN) [GH81-15040A]			
TAPE DOUBLE FACE-BG WP FINGER DECO [GH02-15242A]			Replace for Back Glass Or Finger print sensor repair
S-PEN Cover (KIT only)	[GH82-15091A]		Replace for Front repair

7. Level 2 Repair

7-4. Disassembly

1

1) Put the device in the chamber as following below heating condition
- SOC 68%↓: 70℃/10~20 minute
- SOC 68%↑: 70℃/10~20 minute
※ Please confirm the heating condition released lastly, and follow it.



2

Detach the Back Glass. And Finger sensor
1) Detach the left side of Back glass
2) Detach the Finger sensor connector



※ Caution

1) Be care of scratch

※ Caution

1) Be care of scratch

3

Unscrew 16 Point and disassemble SIM Tray from device



4

Disassemble Upper Rear.
(Use disassemble hole left/right side of Rear to detach it)



Rear Top disassemble hole.

※ Caution

1) Be care of Rear damage

※ Caution

1) Be care of scratch
2) Be care of Rear and connector damage

7. Level 2 Repair

5

Finally Disassemble Rear of bottom side.
(Use disassemble hole right side of Rear to detach it)



※ Caution

- 1) Be care of scratch
- 2) Be care of Rear and connector damage
- 3) Be careful not to damage the PBA

6

Unscrew PBA 1points.

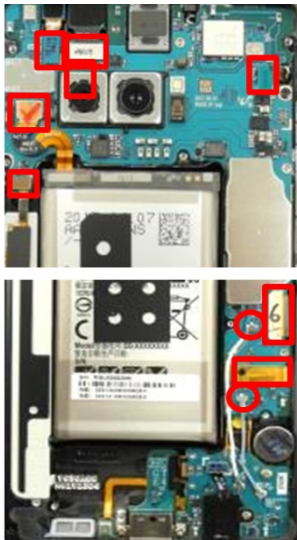


※ Caution

- 1) Be careful not to damage the PBA

7

2 coaxial cable, Battery connect and the other connectors. (9 Point)

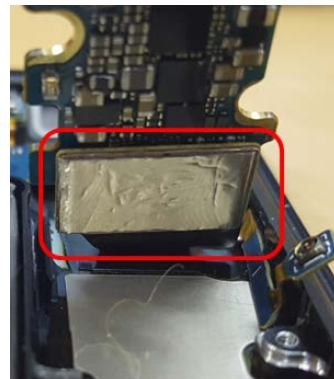


※ Caution

- 1) Be care of scratch
- 2) Be care of connector/cable damage

8

Detach SUB PBA connector



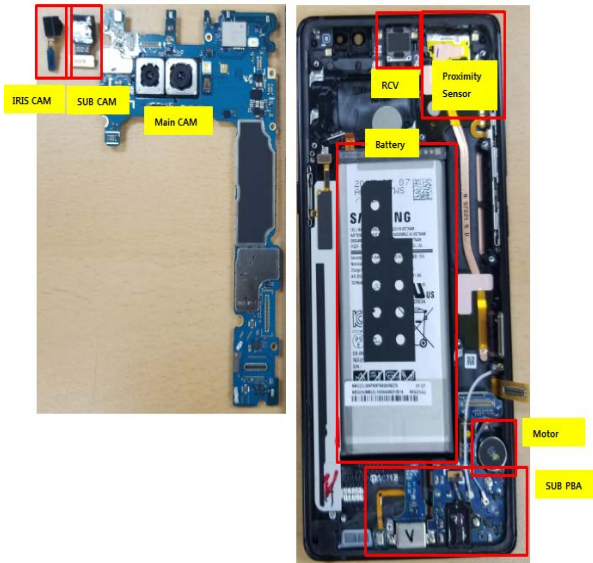
※ Caution

- 1) Be care of FPCB damage
- 2) Be care of SUB PBA connector

7. Level 2 Repair

9

Detach other components.



※ Caution

1) Be care of several kinds of damage

10

Unscrew SUB PBA 4points



※ Caution

1) Be careful not to damage the SUB PBA

11

Detach Ear Jack

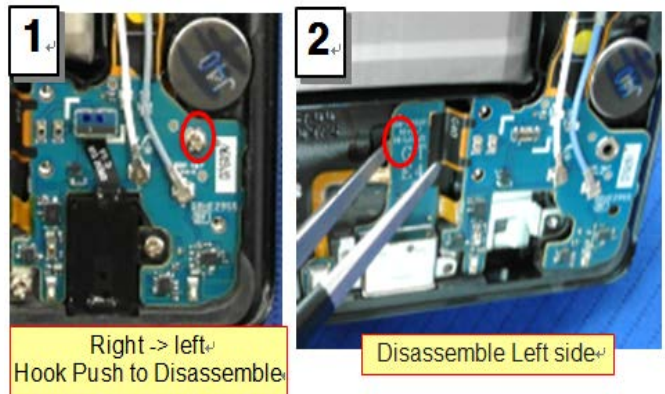


※ Caution

1) Be care of SUB PBA damage
2) Be care of Ear jack connector

12

Detach SUB PBA



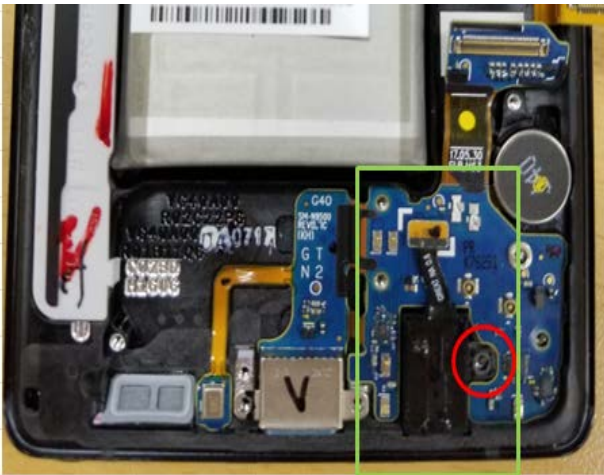
※ Caution

7. Level 2 Repair

7-5. Assembly

1

Attach SUB PBA and Ear jack on Front.



※ Caution

- 1) Be care of coaxial cable damage

2

Screw 4point in SUB PBA.

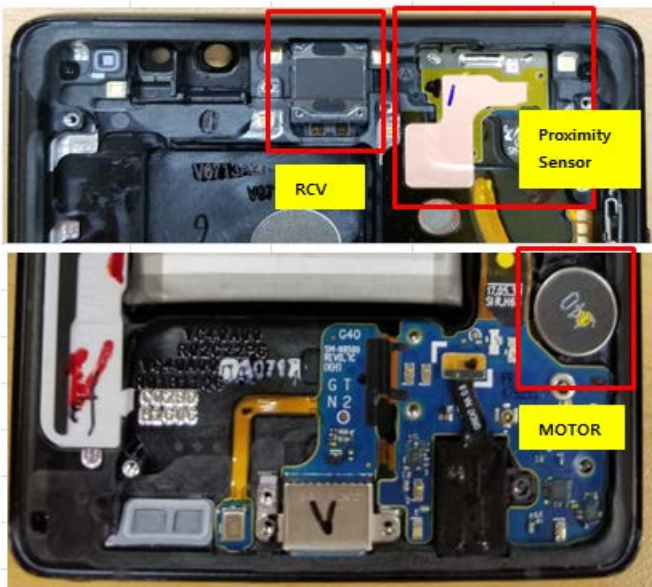


※ Caution

- 1) Be care of chip damage nearby screw point.

3

Attach components on Front.
(RCV module, Sensor FPCB, Motor)

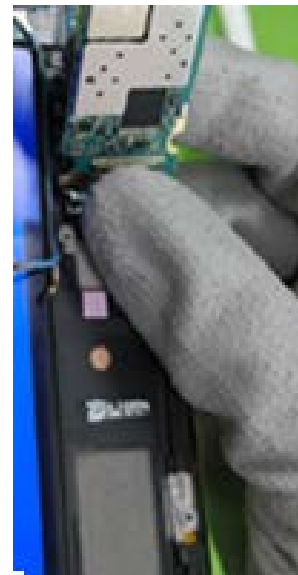


※ Caution

- 1) Be care of FPCB damage and tilt
- 2) Be care of press power/time

4

Attach PBA assy In Front Assy.
(PBA+ Front)



※ Caution

- 1) Be care of Push SUB PBA connector.
- 2) Be care of components FPCB.

7. Level 2 Repair

5

Attach Front CAM and Iris CAM on PBA.

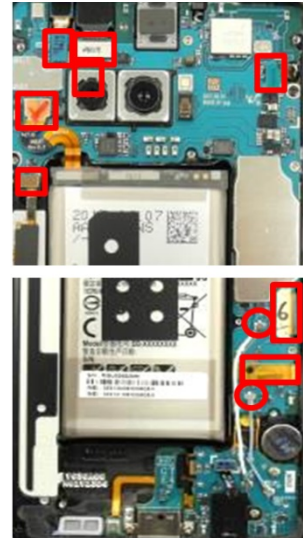


※ Caution

1) Be care of press power/time

6

Attach 2 coaxial cable, Battery connect and the other connectors. (9 Point)

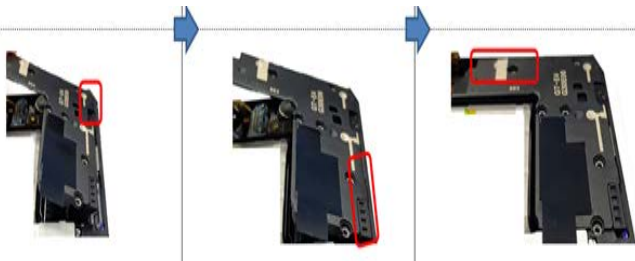


※ Caution

1) Be care of FPCB and Y-OCTA damage

7

Assemble the Bottom REAR in sequence.



※ Caution

1) Be care of scratch and REAR damage

8

Assemble the TOP+MID REAR Assy in sequence.



※ Caution

1) Be care of scratch and REAR damage

7. Level 2 Repair

9

Unscrew 16 Point and disassemble SIM Tray from device



※ Caution

1) Be care of scratch and REAR damage

10

Attach the finger sensor on the REAR and Assemble the finger sensor on the PBA



※ Caution

1) Be care of scratch and tilt.

11

Attach the back glass inner tape on the rear case



※ Caution

1) Be care of scratch and tilt.

12

Attach the finger tape on the back glass.



※ Caution

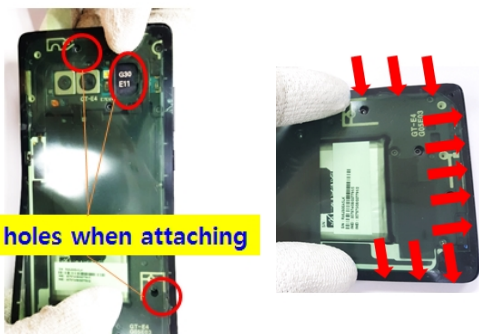
1) Be care of scratch and tilt.

7. Level 2 Repair

13

Attach the back glass outside tape on the rear case

Guide holes when attaching



14

Attach the back glass on the REAR side.



※ Caution

1) Be care of scratch and tilt.

※ Caution

1) Be care of scratch and tilt.

15

Press Back Glass.
Pressing force : 1 N
Pressing time : 1 minute



※ Caution

1) Be care of scratch.